



WAVE

COR-TEN planter

The "Wave" planter is a truncated cone-shaped planter. Wave is mainly designed for the urban environment, for outdoor spaces, gardens or parks.

The relationship between concave and convex in the lower part gives movement and tension of form to the composition, without distorting the simplicity of the overall design. This wavy silhouette allows easy anchoring to the ground and facilitates handling.

Its strengths are: versatility, easy installation and the great aesthetic and mechanical properties of COR-TEN steel.

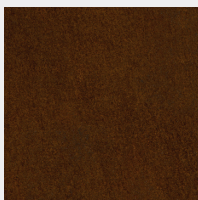
DETAILS

| | |
|-------------------|--|
| Brand | TrackDesign |
| Designer | TrackDesign |
| Typology | Planter |
| Dimensions | upper diameter Ø 850 mm; lower diameter Ø 600 mm H 1000 mm |
| Materials | COR-TEN steel |
| Weight | 40 kg |

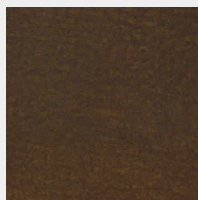
PRODUCT CONFIGURATION

MATERIALI DISPONIBILI

Available in the material:



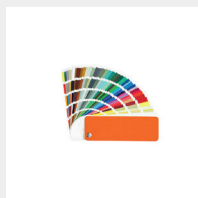
COR-TEN naturale



COR-TEN
ossidazione controllata

AVAILABLE COLORS AND FINISHES

In painted steel available in the colors:



RAL
to be agreed

