



LINE

Corten planter

Line, the planter in natural Corten steel, is the alternative to the traditional vases on terrace or in garden. Thanks to the Corten's technical properties, the outdoor furniture does not need exorbitant and long maintenance phases. Line can be purchased alone or matched with the decoration panel Bee 01 or Bee 02, reproducing original decorations useful to create shadow areas in the garden or to create an outdoor private green corner.

DETAILS

Brand	TrackDesign
Designer	Trackdesign
Typology	Planter
Collection	Line
Dimensions	L 90cm D 40cm H 40cm
Materials	Corten
Weight	22 kg

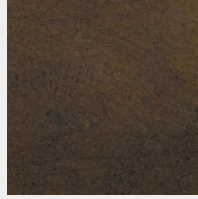
PRODUCT CONFIGURATION

AVAILABLE MATERIALS

Available in:



Natural corten
controlled oxidation
for outdoor use



Waxed corten
for interior use

